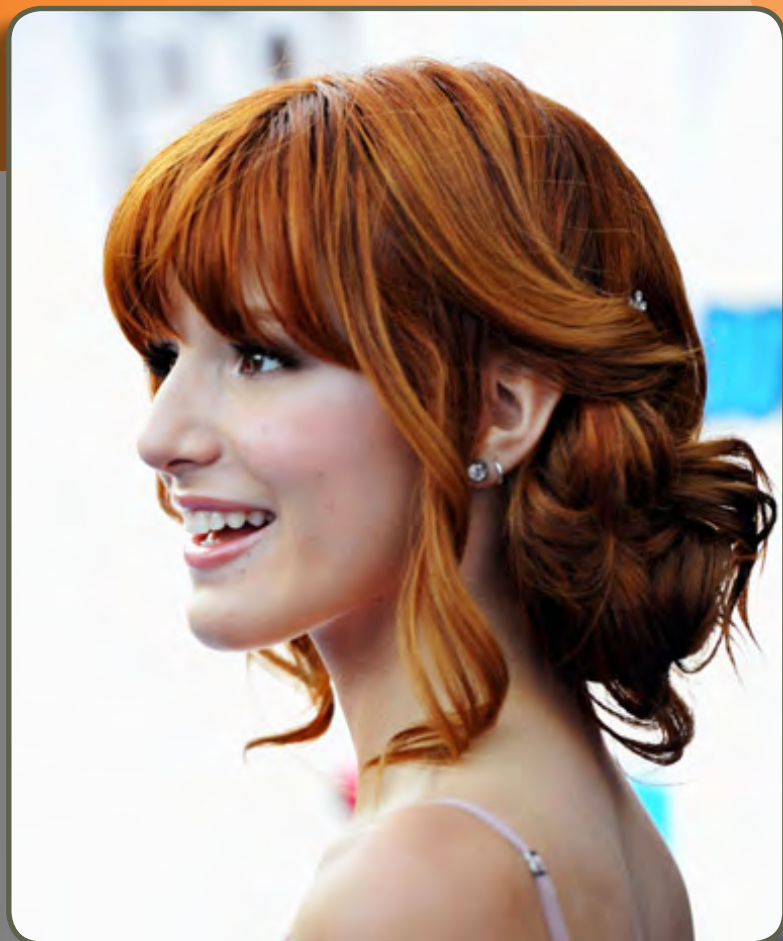


# EVERYONE

## IS TALKING ABOUT



"Bella Thorne styled by Tina Fabulic"

*Tina Fabulic, lead hairstylist explains: "When styling Bella Thorne's hair I love to use the HAI Convertable to smooth her bangs and bevel them ever so slightly to give them a natural looking bend. When styling Bella's signature look on "Shake It Up". I also use the HAI Convertable to put some really soft waves around her temples and face. It creates a more natural curl that most flat irons cannot produce."*



For more information call or visit us on the web at 877-212-8700 | [www.hai-elite.com](http://www.hai-elite.com)